

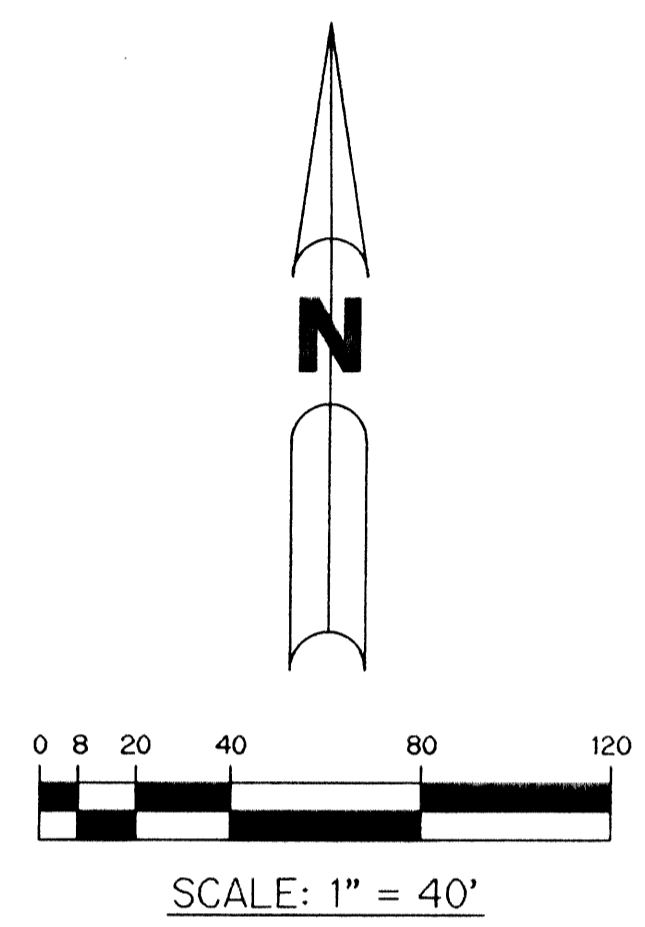
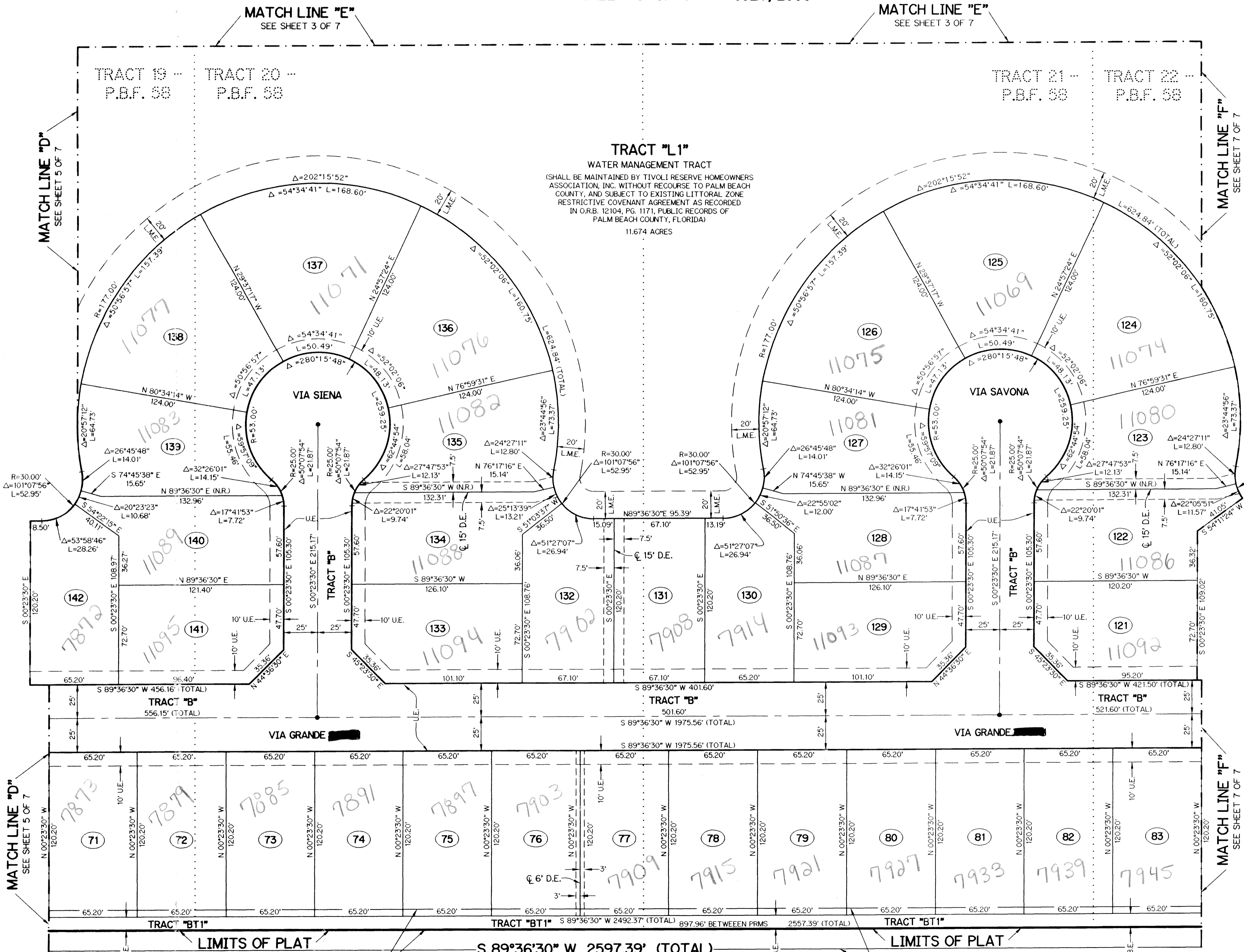
TIVOLI RESERVE

BEING A REPLAT OF ALL OF TRACTS 10 THROUGH 14, 18 THROUGH 23 AND A PORTION OF TRACTS 9, 15, 16, 17 & 24, BLOCK 58, TOGETHER WITH A PORTION OF THE NORTH ONE-HALF OF THE 30 FOOT RIGHT-OF-WAY ADJOINING THE SOUTH LINE OF SAID TRACTS 17 THROUGH 24, BLOCK 58, PALM BEACH FARMS COMPANY PLAT NO. 3, AS RECORDED IN PLAT BOOK 2, PAGES 45 THROUGH 54, OF THE PUBLIC RECORDS OF PALM BEACH COUNTY FLORIDA AND LYING IN SECTIONS 32 AND 33, TOWNSHIP 45 SOUTH, RANGE 42 EAST, PALM BEACH COUNTY, FLORIDA.

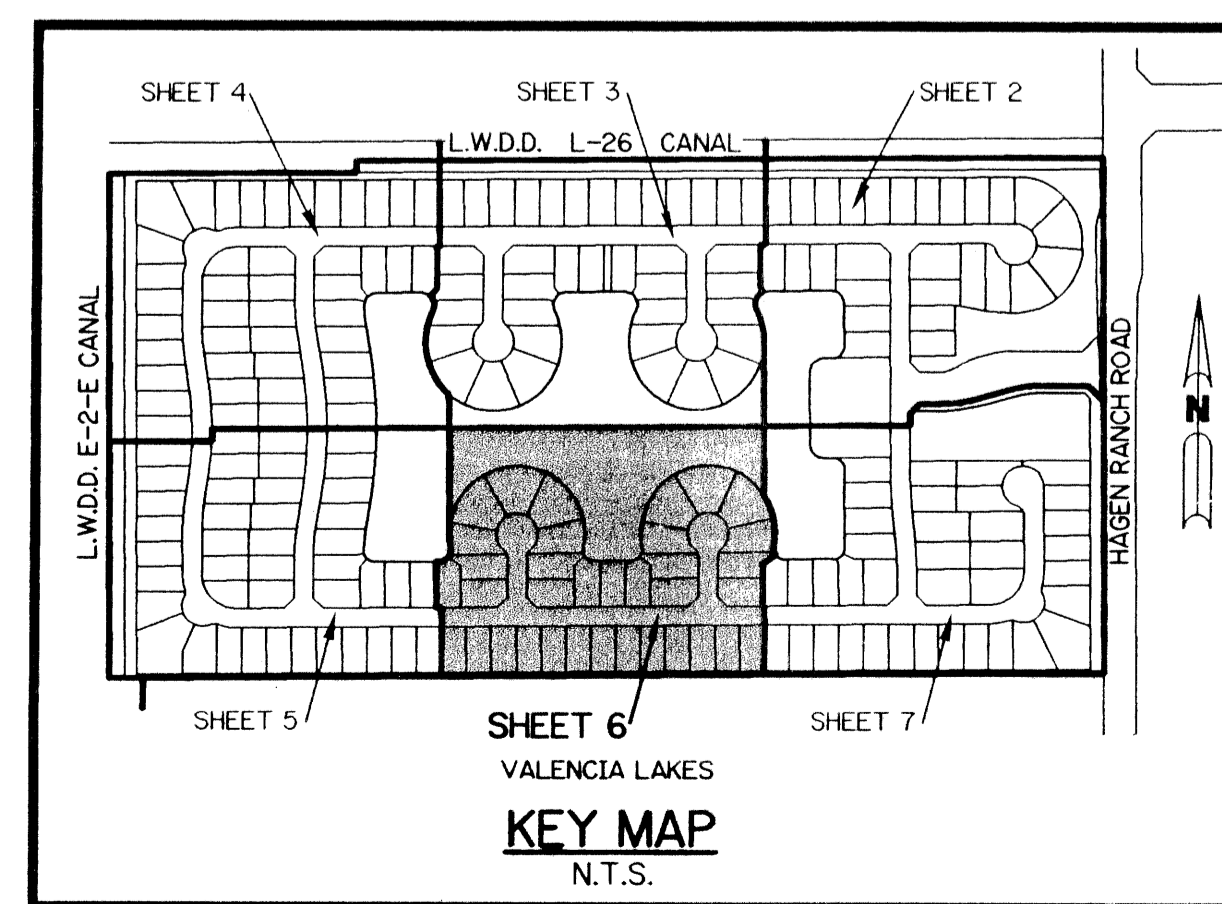
THIS INSTRUMENT PREPARED BY
 WILBUR F. DIVINE, P.S.M. 4190, STATE OF FLORIDA
 LAWSON, NOBLE AND WEBB, INC., LB-6674
 ENGINEERS PLANNERS SURVEYORS
 420 COLUMBIA DRIVE, SUITE 110
 WEST PALM BEACH, FLORIDA

NOTE:
 COORDINATES SHOWN ARE GRID COORDINATES
 DATUM = NAD 83 (1983 ADJUSTMENT)
 ZONE = FLORIDA EAST ZONE
 LINEAR UNIT = U.S. SURVEY FEET
 COORDINATE SYSTEM 1983 STATE PLANE
 TRANSVERSE MERCATOR PROJECTION
 ALL DISTANCES ARE GROUND
 SCALE FACTOR = 1.0000269
 NO ROTATION: PLAT BEARING = GRID BEARING

SHEET 6 OF 7 JULY, 2000



- LEGEND:**
- - SET PERMANENT REFERENCE MONUMENT, LB-6674
 - - PERMANENT CONTROL POINT, PSM #4190
 - Δ - DELTA ANGLE
 - B.E. - BUFFER EASEMENT
 - ⊕ - CENTERLINE
 - C.B. - CHORD BEARING
 - C.H. - CHORD LENGTH
 - D.B. - DEED BOOK
 - D.E. - DRAINAGE EASEMENT
 - L - ARC LENGTH
 - L.A.E. - LIMITED ACCESS EASEMENT
 - L.M.A.E. - LAKE MAINTENANCE ACCESS EASEMENT
 - L.M.E. - LAKE MAINTENANCE EASEMENT
 - L.W.D.D. - LAKE WORTH DRAINAGE DISTRICT
 - N.R. - NOT RADIAL
 - N.T.S. - NOT TO SCALE
 - O.R.B. - OFFICIAL RECORD BOOK
 - P.B. - PLAT BOOK
 - P.B.F. - PALM BEACH FARMS COMPANY PLAT NO. 3 (P.B. 2, PG. 50)
 - PGS. - PAGES
 - P.S.M. - PROFESSIONAL SURVEYOR AND MAPPER
 - R - RADIUS
 - R/W - RIGHT-OF-WAY
 - S.T. - SURVEY TIE
 - U.E. - UTILITY EASEMENT
 - N 814602.8657
E 785753.1680 - DENOTES STATE PLANE COORDINATES



THE SOUTH 15 FEET OF TRACTS 17-24 QUIT CLAIMED FROM WHITWORTH TO SINCLAIR (O.R.B. 8777, PG. 1507)

VALENCIA LAKES - PLAT ONE (P.B. 78, PGS. 13-23)

PALM BEACH FARMS PLAT R/W 30' QUIT CLAIM (O.R.B. 8777, PG. 1498) & (O.R.B. 8777, PG. 1507)